

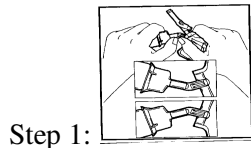
INTRAVENOUS ADMINISTRATION VIA GRAVITY USING MINI BAG PLUS

SUPPLIES:

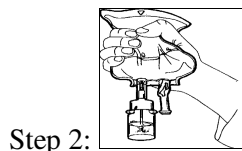
- IV Medication bag with medication vial attached
- IV tubing (**change every M-W-F**)
- (2) Sodium Chloride syringes
- (1) Heparin syringe (if required)
- Alcohol wipes
- (1) Light blue protective cap

PROCEDURE:

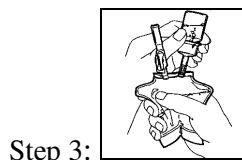
1. Gather equipment. Clean work area. Wash hands.
2. Prepare your flushes as instructed by your nurse.
3. Prepare medication as follows:



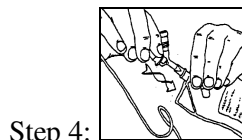
- Step 1: Squeeze bag and check vial for any system leaks. Use only if the vial is fully seated and dry. Bend up then down to break the seal.



- Step 2: Hold the bag with vial down. Squeeze solution into the vial until it is half full. Shake the bag to suspend the drug into solution.



- Step 3: Hold the bag with the vial upside down. Squeeze the bag to force the air into the vial. Release to drain suspended drug from the vial. Repeat these steps until the vial is empty of drug and solution is thoroughly mixed.



- Step 4: Once drug is completely dissolved, insert tubing spike into the administration port using a twisting motion. Do Not remove the drug vial from the bag.

4. Remove gravity tubing from package. Close the roller clamp.
5. Remove protective tab from entry port to medication bag.
6. Remove cover from spike on tubing and inset spike into medication bag using a pushing-twisting motion. **DO NOT TOUCH SPIKE.**
7. Hang medication bag on IV pole. Squeeze drip chamber, filling chamber ½ full.
8. Prime entire length of the tubing by slowly opening the roller clamp. When a droplet of fluid is noted at the end of the tubing, close the roller clamp.
9. Clean the injection cap on the end of your catheter with an alcohol wipe vigorously for 15 seconds.
10. Flush your catheter with Sodium Chloride as instructed by your nurse.
11. Clean the injection cap on the end of your catheter with a new alcohol wipe vigorously for 15 seconds.
12. Attach the gravity tubing to the end of the injection cap.
13. Slowly open the roller clamp to begin the infusion. Adjust the clamp to the setting instructed by your nurse.
14. When the medication bag is empty, close the roller clamp and disconnect the tubing from the injection cap.
15. Keeping the end of the tubing sterile, place a Light blue protective cap on the end of the tubing.

Note: You will reuse the same tubing for more than one infusion. The tubing is to be changed every Monday – Wednesday – Friday.

16. Clean the injection cap on the end of your catheter with alcohol.
17. Flush your catheter with Sodium Chloride as instructed by your nurse.
18. Clean the injection cap on the end of your catheter with a new alcohol wipe.
19. Flush your catheter with Heparin if instructed to do so.

SASH PROCEDURE:

S Sodium Chloride _____mls.
A Administer medication over _____minutes (_____ drops per minute)
S Sodium Chloride _____mls.
H Heparin _____mls (if required)

Revised 5/2009