

SAPPHIRE PUMP EXTERNAL BATTERY PACK – FOR TEMPORARY EMERGENCY USE ONLY

External Battery Pack (EBP)

The External Battery Pack (EBP) is to be used in case of an emergency to extend the pump's operation time when you would be otherwise unable to charge your pump. If something occurs that requires you to use the EBP, you should notify us immediately of the situation at that time.

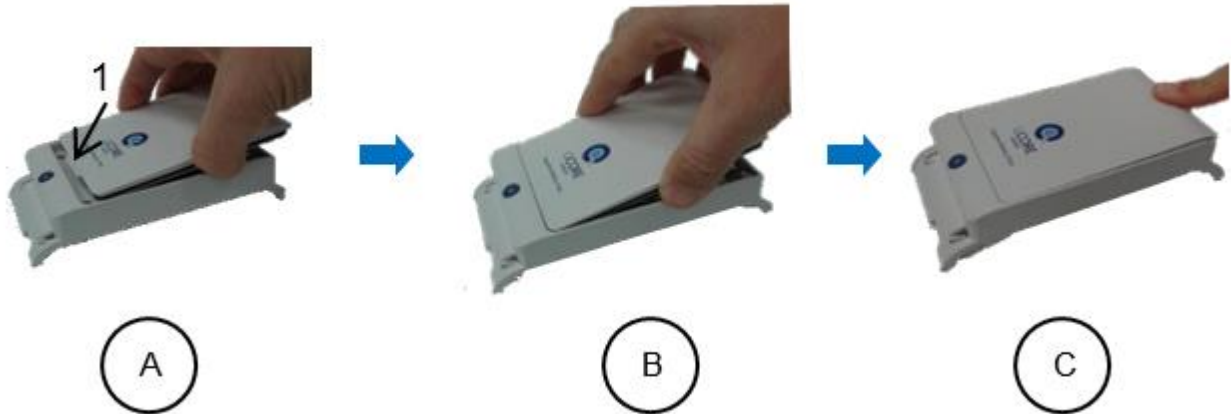
- Do not use the EBP if it is difficult to insert AA batteries or to attach it to the pump.
- Do not use the EBP if the black O-Ring is missing or not attached all around the AA batteries compartment lid.
- Begin using the EBP before the pump shuts down due to battery depletion.
- When using the EBP with the pump, do not connect the power supply to the pump.
- AA Batteries with signs of rust, bad odor, overheating, and/or other irregularities should not be used in the EBP.
- Avoid any contact of the AA batteries with water.



1. Small hooks
2. Large hook
3. Latch
4. Suspension hooks
5. EBP LED

To insert the disposable batteries into EBP (**only to be done immediately prior to use**)

1. Open the AA batteries compartment lid, by pushing the latch up (#3 in above figure).
2. Place the batteries in their slots by pressing the flat end (negative pole) of each battery to the flat metal plates (marked with "-"), and then fix the other end (positive pole) in place (marked with "+").



3. After all six batteries are in place, insert the protrusion at the bottom of the lid (see figure above) to its slot in the EBP, and press the latch downwards until it clicks.

To avoid damaging the product, open and close the batteries compartment lid only as instructed. Avoid using excessive force, as it may crack the plastic or damage the metal parts.

Attaching the Pump to the EBP

4. Insert the bottom of the pump onto the two small hooks at the bottom of the EBP, and then push it to click into the large hook at the top of the EBP. If the power supply is connected to the pump, disconnect it before attaching the EBP.
5. Check for all the indications of proper connection to the EBP:
 - a. The pump turns On.
 - b. The external battery icon appears.
 - c. The LED at the bottom of the EBP turns On.

If the LED at the bottom of the EBP doesn't light, blinks, or turns off: replace the AA batteries in the EBP with new fresh AA batteries.

Detach the EBP when treatment ends, AA batteries are depleted, or stable power supply becomes available. Detach the pump from the EBP before turning the pump Off.

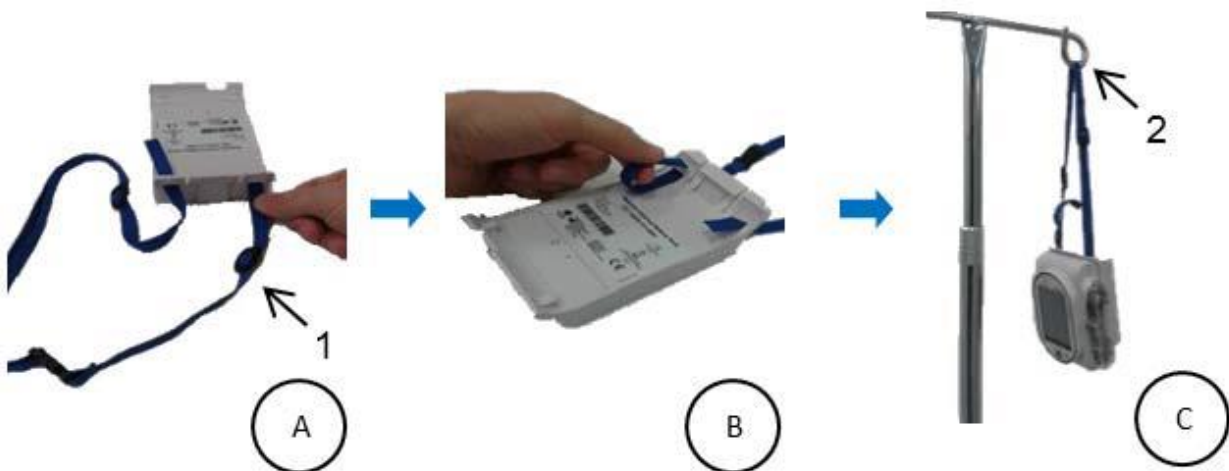
To detach the pump from the EBP:

1. Hold the pump firmly when detaching it from the EBP.

2. Detach the pump from the EBP by gently pulling the large hook until the pump is released from grip. Make sure not to pull the suspension hooks, because this prevents the detachment of the pump from the EBP.
3. Check for all the indications of proper detachment:
 - a. An attention screen, indicating that the pump is operating on Internal Battery, appears.
 - b. Press OK to continue working with the pump.
 - c. The external battery icon disappears.
 - d. The EBP LED turns Off.

Pole Mounted Infusion Usage

If your infusion is pole mounted, a strap must be threaded through the suspension hooks on the pump, and pump with EBP attached can be hung from the pole. Pump **cannot** be mounted to the pole mount cradle with the EBP in place.



1. Place the EBP with the cover facing down.
2. Thread both ends of strap through the bottom notch of the suspension hooks. Make sure that both buckles of the strap are facing up.
3. Bend both ends of the strap to form a loop, and thread each end through the top notch of the suspension hooks.
4. Thread each end through the buckle and stretch to adjust the length.
5. Attach the pump to the EBP and hang on an IV pole.

Important notes:

- AA batteries may deplete when pump is turned off and still attached to the EBP.

- If stable power supply is available, make sure to detach the Pump from the EBP before connecting the pump to a power supply.
- It is recommended to remove the AA batteries from the EBP when not in use.
- Clean only exterior surfaces of the EBP.

Upon return to the company, all equipment is inspected, tested, cleaned, and disinfected in accordance with the manufacturer instructions. Clean equipment is stored in a manner that will prevent recontamination.

While in use in your home:

For infusion and Joey pumps:

- Use a dry, clean cloth to wipe any liquid spillage.
- Use a slightly damp cloth to clean any dust
- When not in use, keep the pump covered to avoid dust accumulation
- If the pump becomes heavily soiled with dirt, blood, or bodily fluids, please contact Chartwell PA for instructions

For Enteralite Infinity Pumps:

- Pump may be cleaned with warm soapy water (standard dish soap) and a non-abrasive sponge or soft cloth for moderate, visible soiling.
- If the pump becomes heavily soiled with formula, dirt, blood, or bodily fluids, please contact Chartwell PA for instructions.

NOTES: